



Contact Your Local Distributor:

Parweld Limited
Bewdley Business Park
Long Bank
Bewdley
Worcestershire
England
DY12 2TZ

tel. +44 1299 266800
fax. +44 1299 266900

web: www.parweld.com
email: info@parweld.co.uk



**SYNERGIC
MIG
MACHINE
OVERVIEW**

Parweld are pleased to introduce our new range of Synergic MIG Machines.

The Parweld multifunction welding power sources for MIG-MAG have been specifically designed and developed for use in the harshest working conditions and for continuous operation.

The Parweld Synergic MIG machines feature;

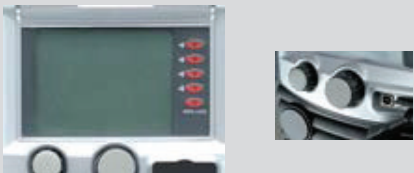
- 6" TFT display for perfect visibility
- One way navigation process for simple setting adjustments
- The innovative SD card system allowing updates to all machine parameters and software
- The Hi Block system which prevents the machines from being used if stolen

Perfect Visibility

All Parweld Synergic machines are supplied with a 6"/150mm TFT colour display allowing operator adjustments to be made easily and accurately from any angle.

The browser and menu provides an intuitive and easy to follow menu system and allows rapid setting and adjustment of the weld parameters.

An extremely strong polycarbonate guard protects the display against knocks or sparks even under the most intense operating conditions.



Parweld SD Card

Parweld SD card guarantees that your welding machine is constantly updated.

An update package ensures you have all the latest software and program updates on a regular basis. These updates can be loaded directly into the machine without the need

for any type of computer device.

This system allows Parweld to deliver new synergic curves directly to the user and is combined with the innovative Hi Block anti-theft system.

Pulse Welding

Modulated transfer (pulsed arc) has been created to overcome the difficulties related to high thermal inputs typical with spray transfer (spray arc).

Pulsed output is used to supply a current much lower than the spray transition current for a precise time, which maintains the arc and heats the wire.

The current is then increased to a higher level in order to melt the wire and to transfer the drop of melted material into the welding pool.

Pulsed arc welding is frequently used for welding of sheet metal especially materials which are particularly sensitive to heat (alloy steels, stainless steels and nonferrous alloys) and generally when welding light alloys or brazing.

The advantages compared to MIG/MAG spray arc and short arc processes are:

- Reduction of thermal input to the work piece (less deformation, metallurgical structure of base material is not modified)
- Drastic reduction of spatter (reduced corrosion risk of base material)
- Elimination of the transition area (where arc is highly unstable) between short arc and spray arc
- Reduction of welding fumes
- Easier to use, also in different positions (reduction of weld prep)
- Better weld aesthetics alloys and thin sheet metal.

Smart Use of Energy (Dual Pulse)

Compared to traditional pulsed arc machines, the lower energy consumption of the Dual Pulse system gives improved control on thin materials with excellent aesthetic results (on par with TIG welding), while having the same welding speed as a typical MIG machine.

Dual Short Process

Dual Short Process is derived from traditional short arc and works with two different power levels.

The first level has a primary current suitable to obtain a higher penetration with the fusion of base materials;

The second level has a lower current output and therefore reduces the thermal effect and the stability of the arc is improved.

Parweld Remote

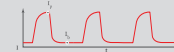
The Parweld Remote pendant is an innovative system for controlling the machine at a distance when it is not possible to have the machine nearby.

Conventional remote controls only allow the operator to make basic adjustments. The Parweld remote allows all adjustments to be made in an extremely compact unit. The Parweld remote puts all the machine information and adjustments right where you need them; you no longer have to leave your post to adjust your welding machine, the adjustments and information will always be with you.

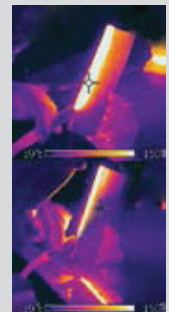
Advantages of Pulse:

- Lower thermal effect (less deformation, less post welding works, less risk of rupture)
- Higher arc stability
- Root pass can be made
- Possibility to weld in different positions
- Easier control of welding pool
- Reduced spray
- Suitable for use with CO2
- Faster than GTAW (TIG)

PULSE PROCESS



DUAL PULSE PROCESS



- 6" TFT colour display for clarity and simplicity

- Ultra-Light and sturdy separate feeder with aluframe structure for low weight and maximum strength

- Machine Trolley - extremely strong, stable and easy to handle

- Power Source - intelligent power source with 4 microprocessors that control all the welding dynamics

- Optional Cooling Unit - A cooling system for using the welding machine in extreme conditions, upto 500 Amps



Range Overview

Model	DP231C	DP323C	DS403SW	DP403SW	DP503SW
Input	Single Phase	Three Phase	Three Phase	Three Phase	Three Phase
Pulsed Function	•	•		•	•
Double Pulsed Function	•	•		•	•
MMA Function	•	•	•	•	•
Lift Arc TIG	x	•	•	•	•
Max Amps	220 Amps	320 Amps	400 Amps	400 Amps	480 Amps
Duty Cycle	35%	40%	40%	40%	30%
Job Store	•	•		•	•
Special Weld Program	Double Short Gap Filling	Double Short Gap Filling	Double Short Gap Filling	Double Short Gap Filling	Double Short Gap Filling
Standard Program	Fe, CrNi, Al, CuSi	Fe, CrNi, Al, CuSi	Fe, CrNi, Al, CuSi	Fe, CrNi, Al, CuSi	Fe, CrNi, Al, CuSi
Wire Sizes	0.6mm-0.8mm 1.0mm-1.2mm	0.6mm-0.8mm 1.0mm-1.2mm 1.6mm	0.6mm-0.8mm 1.0mm-1.2mm 1.6mm	0.6mm-0.8mm 1.0mm-1.2mm 1.6mm	0.6mm-0.8mm 1.0mm-1.2mm 1.6mm
Wire Dimensions in Pulsed Mode	0.8mm-1.0mm 1.2mm	0.8mm-1.0mm 1.2mm		0.8mm-1.0mm 1.2mm	0.8mm-1.0mm 1.2mm
Feed Rolls	4	4	4	4	4
Trolley	Optional	Standard	Standard	Standard	Standard
Water Cooler	Optional	Standard	Standard	Standard	Standard
Weight Kgs	17	45	68	68	72

DP231C

Double Pulse Synergic Single Phase Compact MIG Machine



DP231C Dual Pulse Synergic Single Phase Compact MIG Machine

- | | | |
|---|--|---|
| <ul style="list-style-type: none"> • 240V Single Phase • 35% Duty Cycle @ 220A • 4 Roll Drive • Forced Air Fan Cooling • Infinitely Variable Wire Speed • Overload Warning Indicator • Optional Stand For Full Size Gas Cylinder • Holds 5Kg Wire Spools Internally | <ul style="list-style-type: none"> (Optional External Frame For 15Kg) • Burn Back Control • Soft Start Control • Single Pulse MIG • Double Pulse MIG • Double Short Gap Filling MIG • MIG Brazing • MMA Function | <ul style="list-style-type: none"> • Job Function • Lift Arc TIG Welding • Generator Friendly • 6" / 150mm Digital Display • Custom Program Storage • 2 Year Warranty |
|---|--|---|



The Parweld DP231C offers a wide range of welding capabilities making it ideal for maintenance and auto repair applications.

DC Output

The DP231C has a DC Output and when combined with the correct type of wire it is suitable for welding mild steel, stainless steel, aluminium, galvanised steel and copper alloys.

The machine is ideal for welding a range of materials from 0.5mm to 8.0mm.

Flexible

The microprocessor control ensures that the arc can be closely controlled with specific programs for the welding of aluminium, galvanised and stainless steels .

The pulse and double pulse feature allows greater precision on thin materials giving the appearance of a TIG weld but with the advantages of higher weld speeds.

The unit incorporates a double short gap filling program for root runs.

Versatile and Portable

The DP231C cabinet can accept a 5kg (200mm) spool and a 15kg (300mm) spool on an optional external mounting. It is lightweight and portable.

Standards of Conformance

EN/IEC 60974-1
RoHS Directive, Low Voltage Directive, EMC Directive
(CE Compliant)

Related Products



XR916H
Light Reactive
Welding and Grinding
Helmet



XP300A-40E
XP8 Torch Package

DP231C Dual Pulse Synergic Single Phase Compact MIG	
Stock Code	Description
DP231C	Single Phase Double Pulse MIG Machine

DP231C- Technical Information	
Parameter	Value
Input Voltage	230V / 50-60Hz
Output Range Amps	15A-220A
Output Range Volts	17-29V
Rated Output	220A @ 35% 160A @ 60% 130A @ 100%
Processes	MIG, TIG, MMA.
Fuse	20A
Weight	23kg
Dimensions	560L x 220W x 420H (mm)
Wire Electrode	0.6mm-1.2mm
Insulation / Protection Class	H
Mechanical Protection	IP21S
Wire feed speed	2-20 m/min

Standard Package Includes	
Description	
XP8 Torch Package x 4mt Euro	
Input Cable x 2.5mt	
Earth Cable Clamp Kit x 3mt	
Feed Rolls 0.8mm, 1.0mm, 1.2mm	
Gas Hose x 3mt c/w 3/8" BSP Fittings	

Options	
Stock Code	Description
Torch Packages	
XP300A-50E	XP8 Torch Package x 5mt Euro
Feed Roll Kits	
DR3V0608	Feed Rolls 0.6mm-0.8mm V Groove D30
DR3V0810	Feed Rolls 0.8mm-1.0mm V Groove D30
DR3U0810	Feed Rolls 0.8mm-1.0mm U Groove D30
DR3U1012	Feed Rolls 1.0mm-1.2mm U Groove D30
DR3K1012	Feed Rolls 1.0mm-1.2mm Knurl D30
Accessories	
TR300	Trolley c/w Bottle Stand and External Holder for 15kg wire
PRO26-12S1BD25	Pro-Grip 26 TIG Torch x 12.5ft
706101	Flow Meter Mixed Gas 25lpm (MIG)
806001	Gas Flow Tester

Calibration Certificates are available at the time of order (please note that this is an additional cost).

Stock Code	Description
CERT-MIG	Calibration Certificate

DP323C

Double Pulse Synergic Three Phase Compact MIG Machine



DP323C Three Phase Compact Double Pulsed MIG Machine

- | | | |
|--|--|---|
| <ul style="list-style-type: none"> • 400V Three Phase • 35% Duty Cycle @ 320A • 4 Roll Drive • Forced Air Fan Cooling • Infinitely Variable Wire Speed • Overload Warning Indicator • Stand For Full Size Gas Cylinder • Holds 15Kg Wire Spools Internally | <ul style="list-style-type: none"> • Burn Back Control • Soft Start Control • Single Pulse MIG • Double Pulse MIG • Double Short Gap Filling MIG • MIG Brazing • MMA Function • Lift Arc TIG Welding | <ul style="list-style-type: none"> • Job Store • Optional Cooling Unit • Generator Friendly • 6" / 150mm Digital Display • Custom Program Storage • 2 Year Warranty |
|--|--|---|



The compact Parweld DP323C offers a wide range of welding capabilities making it ideal for workshop use.

DC Output

The DP323C has a DC Output and when combined with the correct type of wire it is suitable for welding mild steel, stainless steel, aluminium, galvanised steel and copper alloys.

The machine is ideal for welding a range of materials from 1.0mm to 12mm.

Flexible

The microprocessor control ensures that the arc can be closely controlled with specific programs for the welding of aluminium, galvanised and stainless steels .

The pulse and double pulse feature allows greater precision on thin materials giving the appearance of a TIG weld but with the advantages of higher weld speeds.

The unit incorporates a double short gap filling program for root runs.

Versatile and Compact

The DP323C cabinet can accept a 15kg (300mm) spool.

Its compact size means it occupies less space in the workshop but still delivers an impressive welding capability.

Standards of Conformance

EN/IEC 60974-1
RoHS Directive, Low Voltage Directive, EMC Directive
(CE Compliant)

Related Products



XP300A-40E
XP8 Torch Package



XR916H
Large View Light
Reactive Welding and
Grinding Helmet

DP323C Three Phase Compact Double Pulsed MIG Machine	
Stock Code	Description
DP323C	Three Phase Double Pulse MIG Machine

DP323C - Technical Information	
Parameter	Value
Input Voltage	400V / 50-60Hz
Output Range Amps	15A-320A
Output Volts	32V
Rated Output	320A @ 40%
	280A @ 60%
	220A @ 100%
Processes	MIG, TIG, MMA
Fuse	12A
Weight	45kg
Dimensions	720L x 270W x 630H (mm)
Wire Electrode	0.6mm-1.6mm
Insulation / Protection Class	H
Mechanical Protection	IP21S
Wire feed speed	2-22 m/min

Standard Package Includes	
Description	
XP8 Torch Package x 4mt Euro	
Input Cable x 2.5mt	
Earth Cable Clamp Kit x 3mt	
Feed Rolls 0.8mm to 1.2mm	
Trolley with Bottle Stand	
Gas Hose x 3mt c/w 3/8" BSP Fittings	

Options	
Stock Code	Description
Torch Packages	
XP300A-50E	XP8 Torch Package x 5mt Euro
Feed Roll Kits	
DR7V0810	Feed Rolls 0.8mm-1.0mm V Groove D37
DR7V1012	Feed Rolls 1.0mm-1.2mm V Groove D37
DR7V1216	Feed Rolls 1.2mm-1.6mm V Groove D37
DR7U0810	Feed Rolls 0.8mm-1.0mm U Groove D37
DR7U1012	Feed Rolls 1.0mm-1.2mm U Groove D37
DR7U1216	Feed Rolls 1.2mm-1.6mm U Groove D37
DR7K1216	Feed Rolls 1.2mm-1.6mm Knurl D37
DR7K2428	Feed Rolls 2.4mm-2.8mm Knurl D37
Accessories	
WCU	Modular Water cooler
PRO26-12S1BD25	Pro-Grip 26 TIG Torch x 12.5ft
706101	Flow Meter Mixed Gas 25lpm (MIG)
806001	Gas Flow Tester

Calibration Certificates are available at the time of order (please note that this is an additional cost).

Stock Code	Description
CERT-MIG	Calibration Certificate

DS403SW

Three Phase Separate Synergic MIG Machine with built in Water Cooler



DS403S Three Phase Separate Synergic MIG Machine with built in Water Cooler

- | | | |
|--|--|---|
| <ul style="list-style-type: none"> • 400V Three Phase • 40% Duty Cycle @ 400A • 4 Roll Drive • Forced Air Fan Cooling • Infinitely Variable Wire Speed • Overload Warning Indicator • Stand For Full Size Gas Cylinder • Holds 15Kg Wire Spools Internally | <ul style="list-style-type: none"> • Burn Back Control • Soft Start Control • Synergic MIG • Double Short Gap Filling MIG • MIG Brazing • MMA Function • Lift Arc TIG Welding | <ul style="list-style-type: none"> • 6" / 150mm Digital Display • Job Store • Optional Cooling Unit • Custom Program Storage • 2 Year Warranty |
|--|--|---|



The Parweld DS403SW offers a wide range of welding capabilities making it ideal for workshop on large fabrications.

DC Output

The DS403SW has a DC Output and when combined with the correct type of wire it is suitable for welding mild steel, stainless steel, aluminium, galvanised steel and copper alloys.

The machine is ideal for welding a range of materials from 1.0mm to 12mm.

Flexible

The microprocessor control ensures that the arc can be closely controlled with specific programs for the welding of aluminium, galvanised and stainless steels.

The synergic control ensures low levels of spatter, uniform penetration and bead profile.

The unit incorporates a double short gap filling program for root runs.

Versatile

The DS403SW has a separate wire feeder which allows the machine to be used in areas with limited access.

Standards of Conformance

EN/IEC 60974-1
RoHS Directive, Low Voltage Directive, EMC Directive
(CE Compliant)

Related Products



XR916H/E
Everyday Light
Reactive Welding and
Grinding Helmet -
Eagle



XP350A-40E
XP8 Torch Package

DS403SW Three Phase Separate Synergic MIG Machine	
Stock Code	Description
DS403SW	Three Phase Separate MIG Machine

DS403SW - Technical Information	
Parameter	Value
Input Voltage	400V / 50-60Hz
Output Range Amps	15A-400A
Output Volts	36V
Rated Output	400A @ 40% 340A @ 60% 250A @ 100%
Processes	MIG, TIG, MMA
Fuse	16A
Weight	68kg
Dimensions	1100L x 580W x 1510H (mm)
Wire Electrode	0.6mm-1.6mm
Insulation / Protection Class	H
Mechanical Protection	IP21S
Wire feed speed	2-22 m/min

Standard Package Includes	
Description	
XP8 Torch Package x 4mt Euro	
Input Cable x 2.5mt	
Earth Cable Clamp Kit x 3mt	
Feed Rolls 0.8mm to 1.2mm	
Gas Hose x 3mt c/w 3/8" BSP Fittings	
Modular Water Cooler	
Interconnect Cable x 5mt Water Cooled	
Trolley with Bottle Stand	

Options	
Stock Code	Description
Torch Packages	
XP450W-40E	XP8 Torch Package x 4mt Watercooled
Feed Roll Kits	
DR7V0810	Feed Rolls 0.8mm-1.0mm V Groove D37
DR7V1012	Feed Rolls 1.0mm-1.2mm V Groove D37
DR7V1216	Feed Rolls 1.2mm-1.6mm V Groove D37
DR7U0810	Feed Rolls 0.8mm-1.0mm U Groove D37
DR7U1012	Feed Rolls 1.0mm-1.2mm U Groove D37
DR7U1216	Feed Rolls 1.2mm-1.6mm U Groove D37
DR7K1216	Feed Rolls 1.2mm-1.6mm Knurl D37
DR7K2428	Feed Rolls 2.4mm-2.8mm Knurl D37
Accessories	
IC050	Interlink Cable 5mt Water Cooled
IC100	Interlink Cable 10mt Water Cooled
WCU	Modular Water Cooler
PRO26-12S1BD25	Pro-Grip 26 TIG Torch x 12.5ft
706101	Flow Meter Mixed Gas 25lpm (MIG)
806001	Gas Flow Tester

Calibration Certificates are available at the time of order (please note that this is an additional cost).

Stock Code	Description
CERT-MIG	Calibration Certificate

MACHINE

MACHINE

DP403SW

Double Pulse Synergic Three Phase Separate MIG Machine with built in Water Cooler



DP403SW Three Phase Separate Pulsed MIG Machine with built in Water Cooler

- 400V Three Phase
- 40% Duty Cycle @ 400A
- 4 Roll Drive
- Forced Air Fan Cooling
- Infinitely Variable Wire Speed
- Overload Warning Indicator
- Stand For Full Size Gas Cylinder
- Holds 15Kg Wire Spools Internally
- Burn Back Control
- Soft Start Control
- Single Pulse MIG
- Double Pulse MIG
- Double Short Gap Filling MIG
- MIG Brazing
- MMA Function
- Lift Arc TIG Welding
- Generator Friendly
- 6" / 150mm Digital Display
- Job Store
- Optional Cooling Unit
- Custom Program Storage
- 2 Year Warranty



The Parweld DP403SW offers a wide range of welding capabilities making it ideal for large workshop fabrications.

DC Output

The DP403SW has a DC Output and when combined with the correct type of wire it is suitable for welding mild steel, stainless steel, aluminium, galvanised steel and copper alloys.

The machine is ideal for welding a range of materials from 1.0mm to 15mm.

Flexible

The microprocessor control ensures that the arc can be closely controlled with specific programs for the welding of aluminium, galvanised and stainless steels.

The pulse and double pulse feature allows greater precision on thin materials giving the appearance of a TIG weld but with the advantages of higher weld speeds.

The unit incorporates a double short gap filling program for root runs.

Versatile

The DP403SW has a separate wire feeder which allows the machine to be used in areas with limited access.

Standards of Conformance

EN/IEC 60974-1
RoHS Directive, Low Voltage Directive, EMC Directive
(CE Compliant)

Related Products



XR916H/A
Everyday Light Reactive Welding and Grinding Helmet - Eagle



XP350A-40E
XP8 Torch Package

DP403SW Three Phase Separate Pulsed MIG Machine	
Stock Code	Description
DP403SW	Three Phase Separate Pulsed MIG Machine
DP403SW - Technical Information	
Parameter	Value
Input Voltage	400V / 50-60Hz
Output Range Amps	15A-400A
Output Volts	36V
Rated Output	400A @ 40% 340A @ 60% 250A @ 100%
Processes	MIG, TIG, MMA
Fuse	16A
Weight	68kg
Dimensions	1100L x 580W x 1510H (mm)
Wire Electrode	0.6mm-1.6mm
Insulation / Protection Class	H
Mechanical Protection	IP21S
Wire feed speed	2-22 m/min
Standard Package Includes	
Description	
XP8 Torch Package x 4mt W/C	
Input Cable x 2.5mt	
Earth Cable Clamp Kit x 3mt	
Feed Rolls 0.8-1.0mm, 1.0-1.2mm	
Gas Hose x 3mt c/w 3/8" BSP Fittings	
Interconnect Cable x 5mt Water Cooled	
Modular Water Cooler	
Trolley with Bottle Stand	
Options	
Stock Code	Description
Torch Packages	
XP450W-50E	XP8 Torch Package x 5mt Euro
Feed Roll Kits	
DR7V0810	Feed Rolls 0.8mm-1.0mm V Groove D37
DR7V1012	Feed Rolls 1.0mm-1.2mm V Groove D37
DR7V1216	Feed Rolls 1.2mm-1.6mm V Groove D37
DR7U0810	Feed Rolls 0.8mm-1.0mm U Groove D37
DR7U1012	Feed Rolls 1.0mm-1.2mm U Groove D37
DR7U1216	Feed Rolls 1.2mm-1.6mm U Groove D37
DR7K1216	Feed Rolls 1.2mm-1.6mm Knurl D37
DR7K2428	Feed Rolls 2.4mm-2.8mm Knurl D37
Accessories	
IC050	Interlink Cable 5mt Water Cooled
IC100	Interlink Cable 10mt Water Cooled
WCU	Modular Water Cooler
PRO26-12S1BD25	Pro-Grip 26 TIG Torch x 12.5ft
706101	Flow Meter Mixed Gas 25lpm (MIG)
806001	Gas Flow Tester
Calibration Certificates are available at the time of order (please note that this is an additional cost).	
Stock Code	Description
CERT-MIG	Calibration Certificate

DP503SW

Double Pulse Synergic Three Phase Separate MIG Machine with built in Water Cooler



DP503SW Three Phase Separate Pulsed MIG Machine with built in Water Cooler

- | | | |
|---|---|---|
| <ul style="list-style-type: none"> • 400V Three Phase • 30% Duty Cycle @ 480A • 4 Roll Drive • Forced Air Fan Cooling • Infinitely Variable Wire Speed • Overload Warning Indicator • Stand For Full Size Gas Cylinder • Holds 15Kg Wire Spools Internally • Burn Back Control | <ul style="list-style-type: none"> • Soft Start Control • Single Pulse MIG • Double Pulse MIG • Double Short Gap Filling MIG • MIG Brazing • MMA Function • Lift Arc TIG Welding • Generator Friendly • 6" / 150mm Digital Display | <ul style="list-style-type: none"> • Job Store • Optional Cooling Unit • Custom Program Storage • 2 Year Warranty |
|---|---|---|



The Parweld DP503SW offers a wide range of welding capabilities making it ideal for large workshop fabrications.

DC Output

The DP503SW has a DC Output and when combined with the correct type of wire it is suitable for welding mild steel, stainless steel, aluminium, galvanised steel and copper alloys.

The machine is ideal for welding a range of materials from 1.0mm to 20mm.

Flexible

The microprocessor control ensures that the arc can be closely controlled with specific programs for the welding of aluminium, galvanised and stainless steels .

The pulse and double pulse feature allows greater precision on thin materials giving the appearance of a TIG weld but with the advantages of higher weld speeds.

The unit incorporates a double short gap filling program for root runs

Versatile

The XTS DP503S has a separate wire feeder which allows the machine to be used in areas with limited access.

Standards of Conformance

EN/IEC 60974-1
RoHS Directive, Low Voltage Directive, EMC Directive
(CE Compliant)

DP503SW Three Phase Separate Pulsed MIG Machine	
Stock Code	Description
DP503SW	Three Phase Separate Pulsed MIG Package

DP503SW - Technical Information	
Parameter	Value
Input Voltage	400V / 50-60Hz
Output Range Amps	15A-480A
Output Volts	36V
Rated Output	480A @ 30%
	380A @ 60%
	350A @ 100%
Processes	MIG, TIG, MMA
Fuse	20A
Weight	72kg
Dimensions	1100L x 580W x 1510H (mm)
Wire Electrode	0.6mm-1.6mm
Insulation / Protection Class	H
Mechanical Protection	IP21S
Wire feed speed	2-22 m/min

Standard Package Includes	
Description	
XP8 Torch Package x 4mt water cooled	
Input Cable x 2.5mt	
Earth Cable Clamp Kit x 3mt	
Interlink Cable 1.5m	
Feed Rolls 0.8-1.0, 1.0-1.2, 1.2-1.6mm	
Gas Hose x 3mt c/w 3/8" BSP Fittings	
Interconnect Cable x 5mt Water Cooled	
Modular Water Cooler	
Trolley with Bottle Stand	

Related Products



XR916H
Everyday Light
Reactive Welding and
Grinding Helmet



XP450W-40E
XP8 Torch Package

Options	
Stock Code	Description
Torch Packages	
XP450W-50E	XP8 Torch Package x 5mt Euro

Feed Roll Kits	
DR7V0810	Feed Rolls 0.8mm-1.0mm V Groove D37
DR7V1012	Feed Rolls 1.0mm-1.2mm V Groove D37
DR7V1216	Feed Rolls 1.2mm-1.6mm V Groove D37
DR7U0810	Feed Rolls 0.8mm-1.0mm U Groove D37
DR7U1012	Feed Rolls 1.0mm-1.2mm U Groove D37
DR7U1216	Feed Rolls 1.2mm-1.6mm U Groove D37
DR7K1216	Feed Rolls 1.2mm-1.6mm Knurl D37
DR7K2428	Feed Rolls 2.4mm-2.8mm Knurl D37

Accessories	
IC050	Interlink Cable 5mt Water Cooled
IC100	Interlink Cable 10mt Water Cooled
WCU	Modular Water Cooler
PRO26-12S1BD25	Pro-Grip 26 TIG Torch x 12.5ft
706101	Flow Meter Mixed Gas 25lpm (MIG)
806001	Gas Flow Tester

Calibration Certificates are available at the time of order (please note that this is an additional cost).

Stock Code	Description
CERT-MIG	Calibration Certificate

MACHINE

MACHINE

MACHINE

MACHINE